



PSM1000

Parker Spread Master System **A Complete Salt and Sand Control System**

Parker Hannifin introduces the
Model PSM1000 Parker Spread Master System
designed to provide reliable application of salt and sand with remote electronics and a safer quieter cab environment. The electronics provide remote proportional control of the Feed Rate and Spinner for your V-Box or Tailgate Spreader.
The PSM1000 System will provide greater return on operator investment through accuracy in distribution control.

Features and Benefits:

- Complete System with One Part Number
- Electronics, Wire Harness and Hydraulic Manifold Shipped in One Box
- Deutsch and Weather Pak Connectors, You Only Connect Power and Ground
- 500 ms Fixed Ramps for Accel and Decel
- Circuit Protection: If Overload Condition, System Shuts Down; Reset Power Button to Restart.
- Operating Range -40 Degrees F to 180 Degrees F
- IP65 Electronic Enclosure for Splash Proof "Coffee Test"
- "Blast" is a Momentary Button for a 5 Second Duration at Maximum Output with controller on or off for spot applications.
- Back-lit for easy viewing of position in night time operation

Performance Objectives:

- Total System Reliability
- Safer/Quieter Environment
- Improved Cab Ergonomics
- User Friendly

Parker Solution:

- Complete System from Parker
- Removed Hydraulics from Cab with Remote Compact Electronics
- Easy to Operate Controls



PSM1000C

PSM1000C Features:

- Main Power Button
- Temperature Compensated at 200Hz PWM for Stable Electronic Control
- Feed Rate Speed Control – 10 detents
- Spinner Speed Control – 10 detents
- Blast Button – Preset for 5 Second Duration
- EMI/RFI Compliant
- Solid State Circuit Protection
- Wiring Harness Included for Plug-N-Play Capability

PSM1000M Features:

- Feed Rate Proportional Cartridge 16 gpm
- Spinner Proportional Cartridge 7 gpm
- Manual Over-Rides
- Proportional Unloader for Fixed Displacement Pumps
- System Safety Relief in Open Center Systems
- Standard SAE Ports with Gage port added
- 3000 psi Operation
- Load Sense System Capability



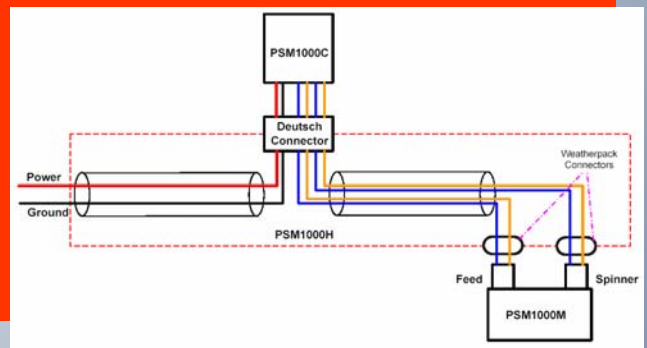
PSM1000M



System #PSM1000 includes:

- Electronic Control Module PSM1000C
- Control Manifold Assembly PSM1000M
- Wiring Harness PSM1000H
- Application Instructions PSM1000AI

System Schematic:



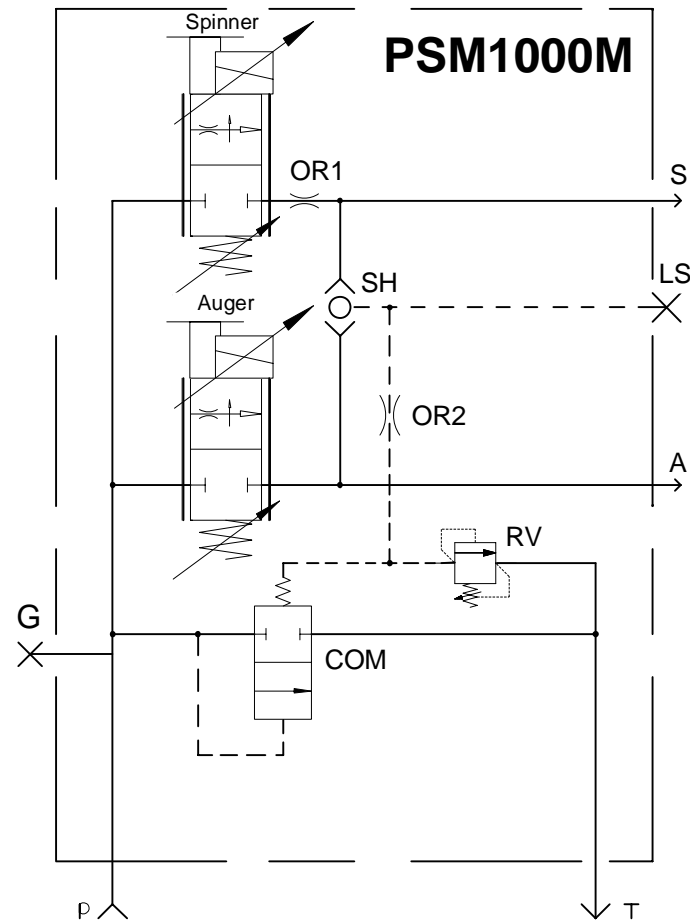
ORDER PART NUMBER:

PSM1000

Parker Hannifin Corporation

Integrated Hydraulics Division
 595 Schelter Road
 Lincolnshire, Illinois 60069
 (847) 955-5000
 www.parker.com/ihd

HY15-2006/US
 1M 5/06



For Open Center Systems

- Designed for Fixed Displacement Pumps
- Power Beyond of Open Center Valve will be plumbed to "P" port of PSM1000M....L.S. port will remain plugged.....
- With series circuit, spool valves will have priority and interrupt flow to PSM1000M spreader requirements.....

For Closed Center Systems with Load Sensing pumps

- Block "T" and connect the LS port to the Pump LS via a LS Shuttle valve, CS041B-A4T, when used in conjunction with any other LS control valve.

PSM1000 APPLICATION INSTRUCTIONS

After the PSM1000 System has been installed, the PSM1000C Controller must be calibrated for the Spreader System in the vehicle.

Calibration controls are found in the rear of the PSM1000C. See below:

MIN Adjustment pot sets the minimum speed the function will operate at when the controller is set to position 1.

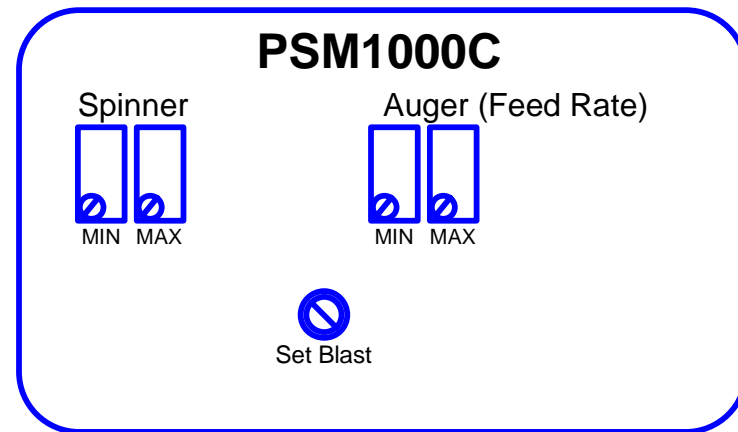
Turn clockwise for a higher "I MIN" setting.

MAX Adjustment pot sets the maximum speed the function will operate at when the controller is set to position 10.

Turn clockwise for a higher "I MAX" setting

Max current should not exceed 2.2 amps

*Adjustments should only be made with a small flat head screwdriver



Set Blast controls the current level sent to the Auger control in the "Blast" mode. Set this control for the desired feed rate in the "Blast" mode.

PARKER HANNIFIN CORPORATION		
INTEGRATED HYDRAULIC DIVISION LINCOLNSHIRE, ILLINOIS, USA		
TITLE PSM1000 Application Instructions		
Drawing Number:		PSM1000AI
Date	5/11/06	Rev C