

Diagnostic Products

Special Note

All Parker SensoControl hand-held diagnostic meters are now equipped with the same 5-pin push-pull style connector ports. This means accessories such as pressure sensors, temperature sensors, flow meters, tachometers and cables are all interchangeable between the Serviceman and the Parker Service Master meters.



Temperature Sensor

for Serviceman and the Parker Service Master. Can be used with Parker flow sensors or with an SCTA-1/4 port adapter. Accuracy: ±1.5% Full scale Temperature range: -13°F to 257°F (-25°C to 125°C)

Part Number
SCT-150-04-02



SCRPM Tachometer

for Serviceman and the Parker Service Master Meters. Displays a precision measurement of rotational speed. 5-pin push-pull style connector.

Part Number
SCRPM-220

Technical Data

Measuring Range20 – 10,000 RPM
Measuring Distance0.1 – 19.5 in
Accuracy0.5% FS
Excitation Voltage7 – 9 VDC
Output Signal0 – 3 VDC
Resolution0.5 RPM

Tachometer Adapters

Contact Adapter for belt drive/wheel.

Part Number
SCRPMA-001

Focus Adapter for confined areas.

Part Number
SCRPMA-001



Voltage Adapter

for use with Auxiliary Sensors to the Parker Service Master. Input: 0 - 20 MA or 0 - 10 VDC Accuracy: 0.25% FS

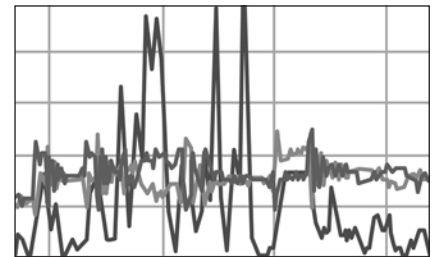
Part Number
SCMA-VADC-600



5 pin to 5 pin Cables

Flow sensor, transducer and temperature probe cables for both Serviceman and the Parker Service Master.

Length	Part Number
10 ft (3 m)	SCK-102-03-02
Extension Cable	
16.4 ft (5 m)	SCK-102-05-12



SensoWIN™ 4.03 & 6.0 Software

for data transfer from all Parker Service Master 450 and Easy Meters to a PC (Windows 98 and newer).

Part Number
SC-CD 4082



Data Cable/Software

for use between the Serviceman Meter and a PC (Windows 98 and newer).

Part Number
SCSW-KIT-152

These flow sensors are a compact light-weight aluminum diagnostic tool capable of measuring pressure, temperature and flow from a single test point in a hydraulic system.

These flow sensors are designed to be used with a wide variety of hydraulic fluids. This design also minimizes the effect of viscosity changes. These units are manufactured from solid aluminum bar stock and are rated to 6000 PSI* and temperatures of 0°F to +350°F. They are available in four sizes with flow measuring ranges from 0.2 – 160 GPM.

Flow sensors are provided with a choice of PD, PDP or EMA style diagnostic ports and are designed to be used with Serviceman™ and the Parker Service Master equipment.



Flow Sensors Technical Data

- Pressure Rating*6000 PSI
** SCFT-7160 is rated to 5000 PSI*
- Fluid Temperature Range0°F to +350°F
- Ambient Temperature Range0°F to +120°F
- Media/CompatibilityPetroleum Based Fluids
(Contact factory for use with water based hydraulic fluids)
- Flow Measurement Accuracy±1.0% Actual Reading
- Voltage Input+7 to 12 VDC
(Supplied by SensoControl meter)
- Current Requirement6mA
- Response Time50 ms
- Viscosity Range11 to 50 cSt

Material Specifications

- Flow BlockAnodized Aluminum
- TurbineStainless Steel
- BearingsStainless Steel
- Seal MaterialNitrile
- Electrical Connection5 Pin Push-Pull Style

How to Order

Measuring Range	Flow Sensor with PD Nipple	Flow Sensor with PDP Nipple	Flow Sensor with EMA Nipple	Inlet/Outlet Port Configuration	Length inches	Height inches	Width inches
0.2 – 4 GPM (1 – 15 l/min)	SCFT-0004-PD	SCFT-0004-PDP	SCFT-0004-EMA	3/4-16 ORB	5.35	4.61	1.46
1 – 16 GPM (4 – 60 l/min)	SCFT-0116-PD	SCFT-0116-PDP	SCFT-0116-EMA	1 1/16-12 ORB	7.48	5.12	2.44
3 – 80 GPM (10 – 300 l/min)	SCFT-0380-PD	SCFT-0380-PDP	SCFT-0380-EMA	1 5/16-12 ORB	7.48	5.28	2.44
5 – 160 GPM (20 – 600 l/min)	SCFT-5160-PD	SCFT-5160-PDP	SCFT-5160-EMA	1 5/8-12 ORB	8.35	5.91	2.44

F Diagnostic



Pressure Transducer Options

- Five measurement ranges:
Vacuum to 8,750 PSI
- Color coded for easy identification
- Corrosion resistant stainless steel housing
- Accuracy of .5% Full Scale (FS)
- Available with PD, PDP or EMA style diagnostic couplings



Transducer Technical Data



	PD * * -0100	PD * * -0600	PD * * -1500	PD * * -4000	PD * * -6000
Measuring Range (Pressure)	-14.5 to 235 PSI	0 to 870 PSI	0 to 2175 PSI	0 to 5800 PSI	0 to 8700 ⁽¹⁾ PSI
Color Code	Blue	Green	Yellow	Orange	Red
Measuring Range (Temp.)	-13°F to 221°F	-13°F to 221°F	-13°F to 221°F	-13°F to 221°F	-13°F to 221°F
Max. Overload Pressure	290 PSI	1450 PSI	3625 PSI	14500 PSI	14500 PSI
Output Signal (Volts)	-0.2 to 2	0 to 3	0 to 3	0 to 3	0 to 3
Hysteresis (% FS Typical)	0.1	0.05	0.1	0.08	0.05
Repeatability (%FS Typical)	0.08	0.13	0.13	0.1	0.1
Non-conformity (%FS)	0.25	0.2	0.2	0.28	0.25
Response Time	1 ms	1 ms	1 ms	1 ms	1 ms
Excitation Voltage	7-12 VDC	7-12 VDC	7-12 VDC	7-12 VDC	7-12 VDC

(1) Maximum Rated Pressure for PD Series Couplers is 6000 PSI.
(2) Maximum Rated Pressure for EMA Series Couplers is 9000 PSI.

“* * ” in the Part Number Represents:
TA = PD Style
PTA = PDP Style
TEMA3 = EMA3 Style (Female)

Materials of Construction

TransducerStainless steel
DiaphragmStainless steel
Coupler . .Chromium-6 Free Plated steel
SealFluorocarbon

Temperature Range

Working-4° to 185°
Fluid-13° to 221°
Storage-40° to 257°

Output

Accuracy0.5% FS
Load2m ohms
Response time<1 ms
Output signal to noise0.1%FS
Resonant frequency100 KHz

Voltage Requirement

7 to 12 VDC excitation voltage
Permissible ripple±2% ss
Current requirement5 mA

Cable End (Pin Out)		
Pin	Mark	Wire Colors
1	P	yellow
2	T	white
3	+	brown
4	-	green
5	SK	grey



Special Note: All Parker SensoControl hand-held diagnostic meters are now equipped with the same 5-pin push-pull style connector ports. Accessories such as pressure sensors, temperature sensors, flow meters, tachometers and cables are all interchangeable between Serviceman and the Parker Service Master meters.



Description	The Parker Serviceman	The Parker Service Master	The Parker Service Master Easy	Part Number
Serviceman Hand-held meter, 2 inputs (Includes SCSN-450 Power Supply)	•			SCM-152-2-02
The Parker Service Master Hand-held meter, 6 inputs, 250,000 data points (Includes SCSN-450 Power Supply)		•		SCM-450-1-01
The Parker Service Master Easy Hand-held meter, 4 inputs, 1,000,000 data points (Includes SCSN-450 Power Supply)			•	SCM-340-2-02
Storage Case	•			SCC-150
Storage Case		•	•	SC-690
Power Supply 120 Volt AC	•	•	•	SCSN-450
Connection Cable Used between meter and sensors (3m length)	•	•	•	SCK-102-03-02
Extension Cable Used in series with connection cables (5m length)	•	•	•	SCK-102-05-12
Pressure Transducers Five measurement ranges	•	•	•	See page F-19
Flow Sensors Four measurement ranges	•	•	•	See page F-20
Temperature Sensor Used with Parker Flow Sensors or SCTA-1/4 Port Adapter (Requires standard connection cable)	•	•	•	SCT-150-04-02
Port Adapter Converts M10X1 to 1/4" male NPT thread	•	•	•	SCTA-1/4
Tachometer To measure rotational speed (0 to 10,000 RPM)	•	•	•	SCRPM-220
Contact Adapter For SCRPM-220 Tachometer	•	•	•	SCRPMA-001
Focus Adapter For SCRPM-220 Tachometer	•	•	•	SCRPMA-002
Diagnostic Test Hose Assembly Used with PD style Parker Transducers and diagnostic nipples	•	•	•	PDH-19
Voltage Adapter Used with auxiliary sensors		•	•	SCMA-VADC-600
Data Cable and Software To connect the Serviceman meter to a PC	•			SCSW-KIT-152
SensoWin 4.03 & 6.0 Software For data transfer from all Parker Service Master meters to a PC		•	•	SC-CD 4082
Data Cable Used between the Parker Service Master 450 meter and a PC		•		SCK-313-02-31
Data Cable Used between the Parker Service Master Easy meter and a PC			•	SCK-315-02-34

F Diagnostic

F Diagnostic

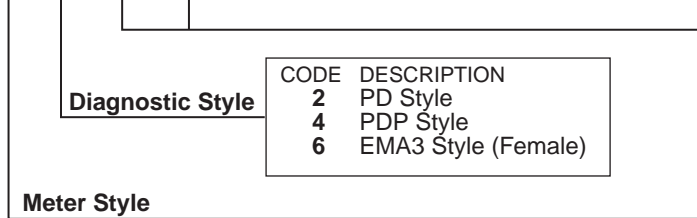
The Parker Service Master Easy 340 Test Meter Kit Includes:

- The CaseSC-690
- The Parker Service Master Easy MeterSCM-340-2-02
- 2 Transducers
(see ordering Information below)
- 2 Transducer Cables (10 Ft.)SCK-102-03-02
- Power SupplySCSN-450
- SensoWin Software 6.0SC-CD 4082
- Usb Computer CableSCK-315-02-34
- Operating Manual
(incl. with the Parker Service Master Easy Meter)



Code for Ordering the Parker Service Master Easy Meter Kits:

PDSM XX - X - XX - XX



CODE	DESCRIPTION
2	PD Style
4	PDP Style
6	EMA3 Style (Female)

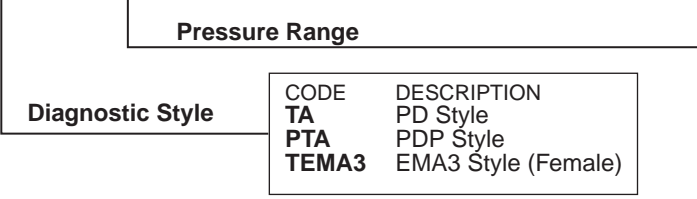
CODE	PRESSURE	COLOR
01	-14.5 – +235 PSI	Blue
06	0 – 870 PSI	Green
15	0 – 2175 PSI	Yellow
40	0 – 5800 PSI	Orange
60	0 – 8700 PSI	Red

CODE	DESCRIPTION
45	The Parker Service Master 340 Meter

Additional Transducers

Code for Ordering Separately:

PD XXXXXX - XXXX



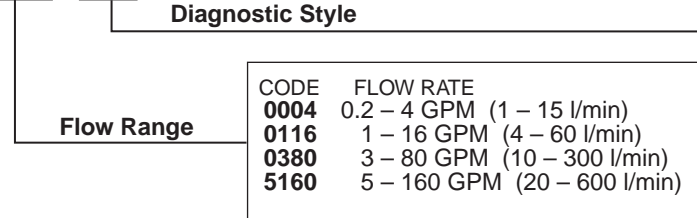
CODE	DESCRIPTION
TA	PD Style
PTA	PDP Style
TEMA3	EMA3 Style (Female)

CODE	PRESSURE	COLOR
0100	-14.5 – +235 PSI	Blue
0600	0 – 870 PSI	Green
1500	0 – 2175 PSI	Yellow
4000	0 – 5800 PSI	Orange
6000	0 – 8700 PSI	Red

Flow Sensors

Code for Ordering Separately:

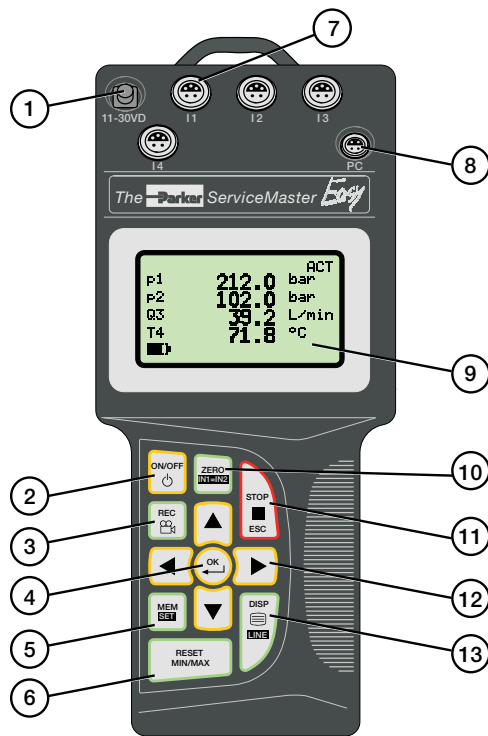
SCFT-XXXX - XXX



CODE	FLOW RATE
0004	0.2 – 4 GPM (1 – 15 l/min)
0116	1 – 16 GPM (4 – 60 l/min)
0380	3 – 80 GPM (10 – 300 l/min)
5160	5 – 160 GPM (20 – 600 l/min)

CODE	DESCRIPTION
PD	PD Style
PDP	PDP Style
EMA	EMA Style

F Diagnostic



Function Descriptions

- 1 11–30 VDC Power Supply Connection
- 2 ON/OFF Meter On and Off
- 3 REC Record Measured Values
- 4 OK Confirms Function or Value
- 5 MEM/SET Memory Configuration/Main Menu (device settings)
- 6 RESET MIN/MAX Delete Min/Max Values
- 7 I1 – I4 Sensor Input Ports
- 8 Meter – PC Connection for USB Cable
- 9 Meter Display 128 x 64 Pixel Display
- 10 Zero/IN1=IN2 Zero or Offset an Input / Set IN1 Equal to IN2
- 11 STOP/ESC Stop or Terminate Functions
- 12 ARROWS Select Line and Function Values
- 13 DISPLAY/LINE Min/Max/Actual or %FS Display

Technical Data

Meter

- Digital LCD Text Display
 - 128x64 pixels
 - 72x40 mm screen
- Character Height 6 mm
- Display of Pressure, Temperature, Flow and Rotational Speed
 - Pressure in PSI and Bar
 - Temperature in °F and °C
 - Flow in GPM and l/min.
 - Rotational Speed in RPM

Inputs

- Four 5-pin push-pull style connectors
- Automatic Sensor Recognition for pressure, temperature, flow and rpm
- 12 Bit A/D Converter (4096 steps)
- Selectable scanning rate in 1 ms intervals
- Burst Mode 0.25 ms (input 1 only)

Functions

- Differential Value Measurement
- MIN/MAX Memory

- On line data transfer
- Battery level indicator
- Power calculation (display only)
- Flow run-out (display only)
- Auto power off

Output

- USB 2.0 interface

Power Requirements

- Internal rechargeable Ni-MH battery
- Recharge circuit for use with external power supply.
- Operating time - 8 hours
- Charge time - 3 hours
- Excitation voltage (12-30 VDC)

Memory Functions

- Memory capacity
 - 1,000,000 data points max
 - 250,000 points per curve
- Variable measuring period up to 100 hours
- Manual and automatic triggering

Ambient Conditions

- Operating Temperatures 32°F to 122°F (0°C to 50°C)
- Storage Temperatures -4°F to 140°F (-20°C to 60°C)
- Protection class IP54

Housing

- Glass reinforced polyamide
- 12-Key tactile touch membrane
- EMC Protection
 - Electromagnetic interference (DIN/EN 50081, Part 1)
 - Immunity to emitted interference (DIN/EN 50082, Part 2)

Dimensions

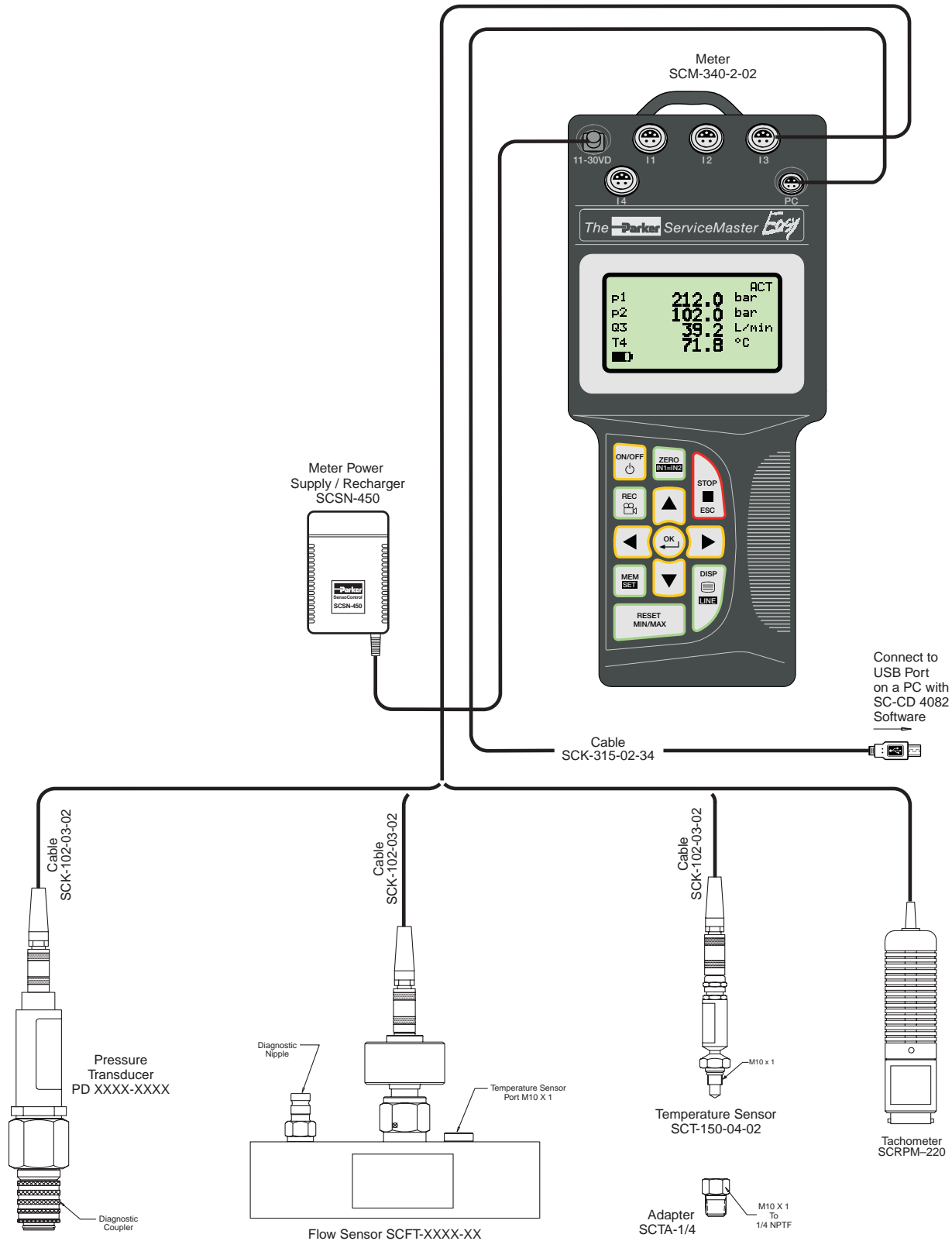
- Length/Height/Width
 - 9.25 x 4.19 x 2.09
 - (235 x 106 x 52 mm)

Weight

- 1.2 lbs (700 grams)

F Diagnostic

The Parker Service Master Easy
Measure and Document Flow, Pressure, Voltage, Current,
Temperature and Rotation Speed



F Diagnostic

Model SCM-340-2-02

Features:

- Ideal for both hydraulic and pneumatic systems
- Easy, intuitive operation
- Large legible display
- Auto sensor recognition
- MIN/MAX Memory
- Multiple sensor inputs
- Battery monitoring
- Plug and Play Software Recognition
- Simultaneous Multi-line Display



Fast measuring and analysis capability coupled with a more efficient and user-friendly interface. This multi-channel instrument offers accuracy, expanded memory and intuitive performance to meet your most demanding expectations.

Offering the latest in sensor recognition technology, the Parker Service Master Easy gives you the ability to measure and store data relating to pressure, flow, temperature and rotational speed simultaneously, or switch between them with ease.

On site data storage – has never been easier or as powerful. The 0.25 ms scanning rate catches even the most instantaneous pressure spikes, flow surges and temperature changes. Up to one million data points can be stored in memory or downloaded to a PC.

Test Meter Kits



Kit Contents:

- CaseSCC-150
 - Serviceman MeterSCM-152-2-02
 - Transducers (Quantity 1 or 2)(See Below)
 - Cable (Quantity 1 or 2)SCK-102-03-02
 - Power Supply – Meter*SCSN-450
 - Instruction Manual*SCM-152-TM
- * Included with Serviceman Meter

**Code for Ordering
Serviceman Meter Kits:**

PDS3 - X - XX - XX **Transducer Pressure Range**
(Choose one or two)

Diagnostic Style

CODE	DESCRIPTION
2	PD Style
4	PDP Style
6	EMA3 Style (Female)

CODE	PRESSURE	COLOR
01	-14.5 – +235 PSI	Blue
06	0 – 870 PSI	Green
15	0 – 2175 PSI	Yellow
40	0 – 5800 PSI	Orange
60	0 – 8700 PSI	Red

Additional Transducers

Code for Ordering Separately:

PD XXXXXX - XXXX

Pressure Range

Diagnostic Style

CODE	DESCRIPTION
TA	PD Style
PTA	PDP Style
TEMA3	EMA3 Style (Female)

CODE	PRESSURE	COLOR
0100	-14.5 – +235 PSI	Blue
0600	0 – 870 PSI	Green
1500	0 – 2175 PSI	Yellow
4000	0 – 5800 PSI	Orange
6000	0 – 8700 PSI	Red

Flow Sensors

Code for Ordering Separately:

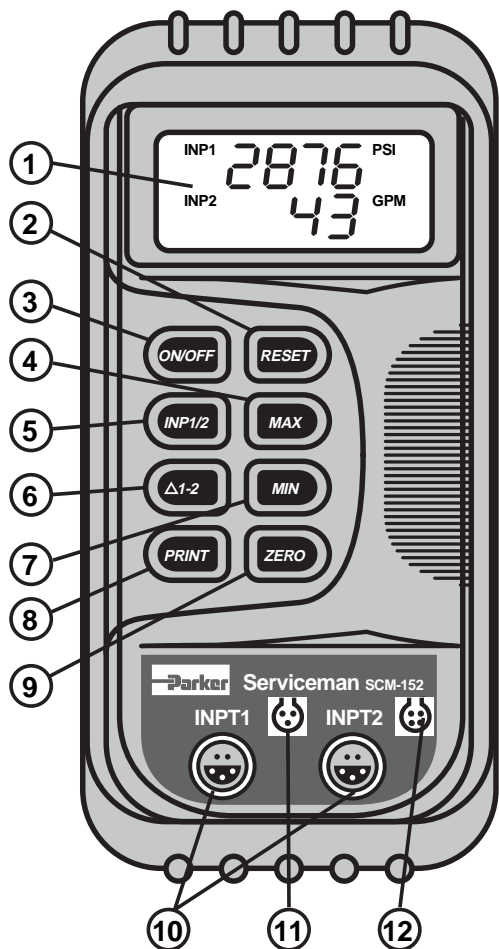
SCFT-XXXX - XXX

Diagnostic Style

Flow Range

CODE	FLOW RATE
0004	0.2 – 4 GPM (1 – 15 l/min)
0116	1 – 16 GPM (4 – 60 l/min)
0380	3 – 80 GPM (10 – 300 l/min)
5160	5 – 160 GPM (20 – 600 l/min)

CODE	DESCRIPTION
PD	PD Style
PDP	PDP Style
EMA	EMA Style



Function Descriptions

- 1 **Two Line Measurement Display**
- 2 **RESET** resets minimum and maximum values to zero
- 3 **ON/OFF** Switch
- 4 **MAX** displays maximum value since meter was last reset or turned on
- 5 **INP1/2** selects whether meter will display measurement from Input 1 or Input 2
- 6 **I1-I2** displays the differential value of Input 1 minus Input 2
- 7 **MIN** displays minimum value since meter was last reset or turned on
- 8 **PRINT** sends displayed measurements to PC or printer
- 9 **HOLD** resets display to zero
- 10 **Two Inputs** (5 pin)
- 11 **External Power Supply** Socket
- 12 **Data Output** via RS232 interface to transmit measured values to PC

Serviceman Technical Data

Meter

- 2 Line Display Shows Both Inputs
- 4 Digit LCD Text Display
- Display of Pressure, Temperature, Flow and Rotational Speed
 - Pressure in PSI and Bar
 - Temperature in °F and °C
 - Flow in GPM and l/min.
 - Rotational Speed in RPM

Housing

- ABS Plastic Housing
- Protective Rubber Cover
- Carrying Strap
- Integral Stand

Inputs

- Two 5-pin push-pull Inputs
- 0-3 Volts (R=470 kΩ)
- 12 Bit A/D Converter
- Automatic Sensor Recognition
- 2 ms Scanning Rate

Ambient Conditions

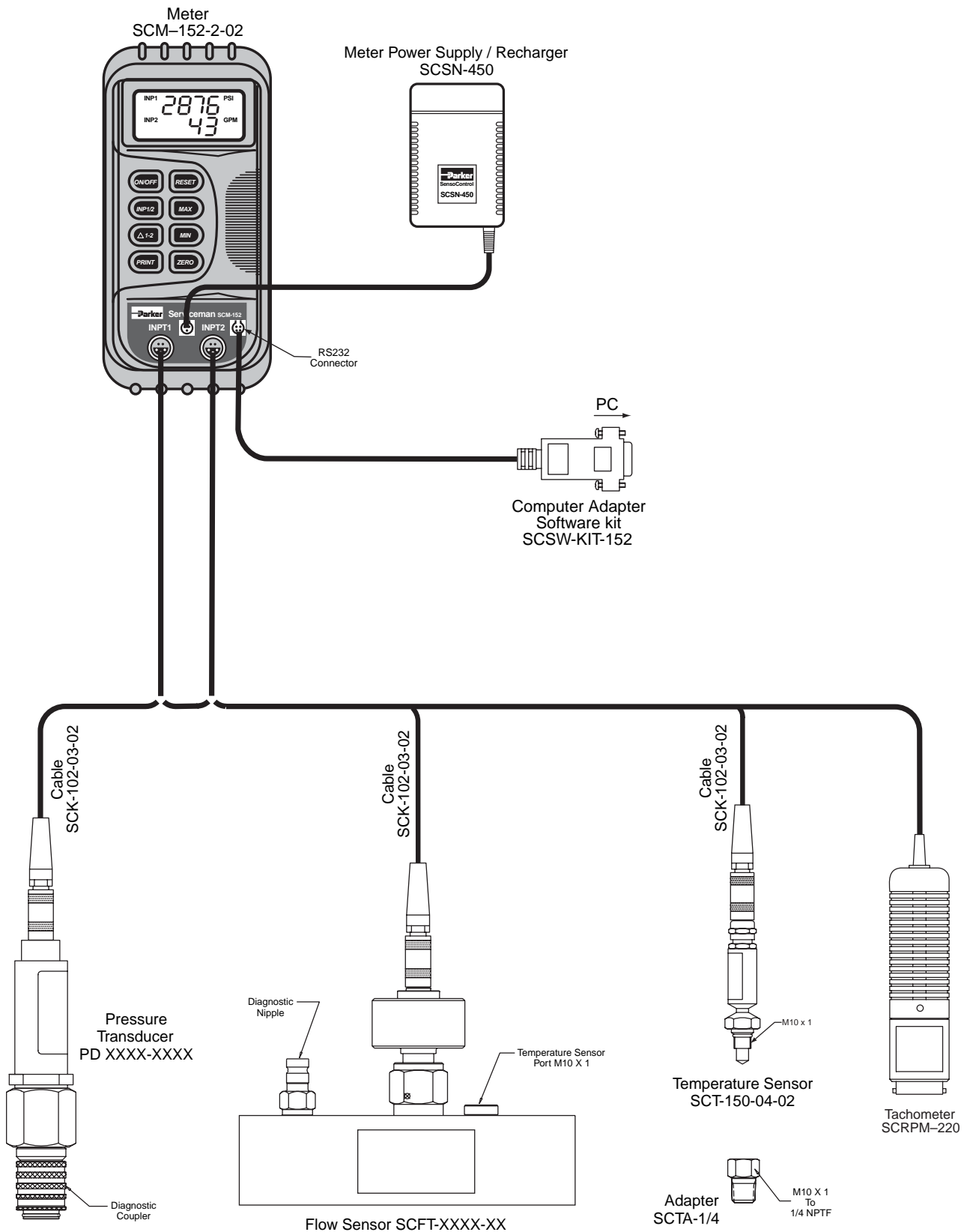
- Operating Temperatures
32°F to 122°F (0°C to 50°C)
- Storage Temperatures
-4°F to 140°F (-20°C to 60°C)

Output

- RS232 Interface to transfer measured values to a PC. The SCSW-KIT-152 software and adapter kit is required for data transfer to a PC.

Power Requirements

- 9 Volt Rechargeable Ni-MH Battery
- Recharge circuit for use with external power supply.
- 5 Hour Battery Life



F Diagnostic

Hand-held Diagnostic Meter to Measure Pressure, Temperature, Flow and Rotational Speed for Hydraulic and Pneumatic Systems

- Easy operation
- Rugged design
- Compact Dimensions
- Two line display
- Auto sensor recognition
- MIN/MAX Memory
- Pressure differential
- External power supply
- Data output for PC



The Serviceman SCM-152 from Parker is a portable diagnostic measuring system – an excellent alternative to conventional mechanical pressure gages – a very rugged, durable test meter that can withstand even the most demanding environmental conditions.

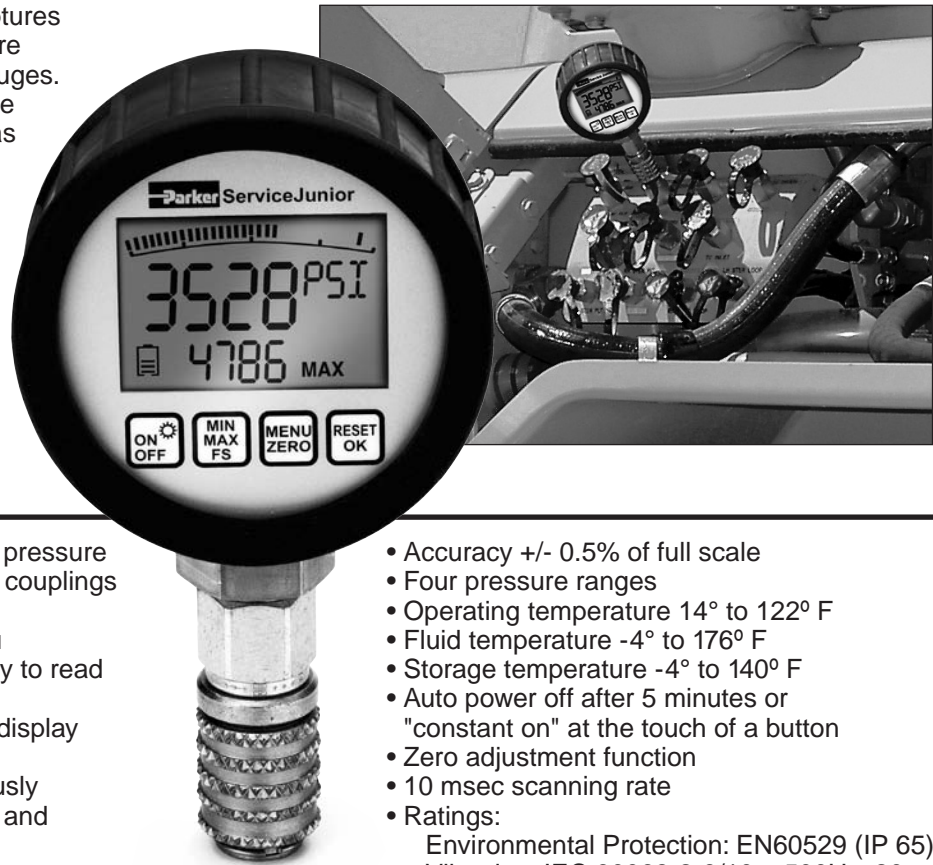
The Serviceman meter uses the latest in sensor recognition technology which eliminates the need for meter adjustment. It's powered by a rechargeable Ni-MH battery system or a 120 volt external power supply for continuous operation

Using Serviceman software (compatible with Windows 98 and newer operating systems) the SCM-152 quickly interfaces with an Excel spread sheet.

The Serviceman field kit is the ideal set of diagnostic tools for maintenance and service personnel in the industrial, mobile and agricultural markets. These units help reduce downtime by recording the best preventative maintenance and diagnostic data available.

Parker Hannifin provides the most complete line of hydraulic and pneumatic diagnostic equipment available today. For more information contact the Quick Coupling Division or your local distributor.

The new Parker ServiceJunior captures momentary pressure spikes that are “invisible” to normal liquid-filled gauges. That means the maximum pressure reading it delivers can be trusted as a much truer reflection of the system’s actual condition; so you can identify potential problems better and diagnose their causes faster. All readings are accurate to within +/-0.5%.



ServiceJunior Features

- Easy to connect and test system pressure using Parker Diagnostic test port couplings
- Robust, dirt resistant housing
- Simple to operate, four key menu
- Four digit backlit display with easy to read large 0.60" characters
- Minimum and maximum graphic display shows pressure peak
- Power status displayed continuously
- Can be used with most hydraulic and pneumatic media
- Measure PSI, bar, mPa, kPa with one gauge
- Accuracy +/- 0.5% of full scale
- Four pressure ranges
- Operating temperature 14° to 122° F
- Fluid temperature -4° to 176° F
- Storage temperature -4° to 140° F
- Auto power off after 5 minutes or "constant on" at the touch of a button
- Zero adjustment function
- 10 msec scanning rate
- Ratings:
Environmental Protection: EN60529 (IP 65)
Vibration: IEC 60068-2-6/10 – 500Hz: 20g
Shock: IEC 60068-2-29/50g 11 msec

Measuring Range	ServiceJunior with PD Coupler	ServiceJunior with EMA3 Coupler	ServiceJunior with 1/4" NPT Port	Overload Pressure	Resolution
-14.5 to 250 PSI (-1 to 16 bar)	SCJR-0250-PD	SCJR-0250-EMA	SCJR-0250-4MP	580 PSI	0.1 PSI
0 to 1500 PSI (0 to 100 bar)	SCJR-1500-PD	SCJR-1500-EMA	SCJR-1500-4MP	2,900 PSI	1 PSI
0 to 5800 PSI (0 to 400 bar)	SCJR-5800-PD	SCJR-5800-EMA	SCJR-5800-4MP	11,600 PSI	1 PSI
0 to 8700 PSI (0 to 600 bar)	SCJR-8700-PD ¹	SCJR-8700-EMA ²	SCJR-8700-4MP	17,400 PSI	1 PSI

NOTES: 1. PD Couplers rated to 6,000 PSI max. 2. EMA3 Couplers rated to 9,000 PSI max.

Accessories

Part Number	Description
PD240	PD Series diagnostic coupler
SCA-7/16-EMA-3	7/16 -18UNF-2B female to M16X2.0 EMA3 female swivel
SCJA-1/4	7/16 -18UNF-2B female to 1/4" NPT male adapter
PDH-19	19" PD Hose extension to be used with PD nipple interface
SMA3-400	16" hose assembly for EMA M16X2.0 interface
SCC-110	Storage case for one gauge and diagnostic adapters
SCC-150	Storage case for two gauges and diagnostic adapters

Diagnostic Products

Meter Selection Guide

Function	The Parker ServiceJunior	The Parker Serviceman	The Parker Service Master 450	The Parker Service Master Easy 340
Pressure Sensing	•	•	•	•
Flow Sensing		•1	•1	•1
Temperature Sensing		•1	•2	•2
Rotational Speed Sensing		•1	•1	•1
Auxiliary Sensing			•1	•1
Pressure Differential		•	•	•
Automatic Sensor Recognition	•	•	•	•
Auto Power Off	•	•	•	•
Battery Monitoring	•	•	•	•
Battery Type	AA (2 req'd)	Rechargeable Ni-MH	Rechargeable Ni-Cad	Rechargeable Ni-MH
PC Compatible (Windows)		•1	•1	•1
Minimum/Maximum Memory	•	•	•	•
Self Contained Memory			•	•
On-Line Data Transfer		•	•	•
Text Display (Lines)	2	2	8	8
Inputs	1	2	6	4
Data Points (Maximum in Memory)			250,000	1,000,000
Graphic LCD Display	•		•	•
Hydraulic Power Calculations			•	•
Volume Calculations			•	•

Notes: (1) Additional accessories are required to perform this function.
 (2) Transducers provide an ambient temperature signal, but additional temperature probes are required for more accurate temperature measurements.

Test Port Coupling Selection Guide

Test Port	Valving	Body Size	Material* Br SS S P	Locking Mechanism	Std. Seal Material	Temp Range**	Rated Pressure
PD Series	Flush Face	1/8"	• • •	Ball	Nitrile	-40° to +250° F	6000 PSI
PDP Series	Ball	1/8"	•	Ball	Nitrile	-40° to +250° F	6000 PSI
EMA3 Series	Poppet	1/8"	• •	Threads	Nitrile/Fluorocarbon	-15° to +250° F	9000 PSI

* See Fluid Compatibility chart and/or consult factory for questions regarding proper material for specific applications.

CODE: Br = Brass; SS = Stainless Steel; S = Steel; P = Plastic

**Temperature Range for standard seal material.

Note: See the Specifications Table for PD and PDP Series for more information.



F Diagnostic

Diagnostic Products



Introduction	F-2	Dust Cap	F-22
Table of Contents	F-3	Couplers	F-23
Product Selection Guide	F-4	Nipples	F-23 - F-24
The ServiceJunior™	F-5	Tube End Nipples	F-24
The SensoControl® Serviceman™		PDP Series	F-25 - F-26
General	F-6	Dust Cap	F-25
Schematic	F-7	Couplers	F-25
Technical Data	F-8	Nipples	F-26
Test Meter Kits	F-9	EMA3 Series	F-27
Components and Accessories	F-18 - F-21	Nipples	F-27
The SensoControl® Service Master		Gauge Adapter & Union	F-28
General	F-10	Transducer Adapters	F-29
Schematic	F-11	Flexible Hose	F-29
Technical Data	F-12	PDFS Series - Fluid Sampling	F-30
Test Meter Kits	F-13	Couplers	F-30
Components and Accessories	F-18 - F-21	Nipples	F-30
The SensoControl® Service Master Easy		Ordering Information	F-31
General	F-14		
Schematic	F-15		
Technical Data	F-16		
Test Meter Kits	F-17		
Components and Accessories	F-18 - F-21		
SensoControl Pressure Transducers	F-19		
SensoControl Flow Sensors	F-20		
Test Port Couplings			
PD Series	F-22 - F-24		



Increasing productivity and profitability are the key elements for a company to successfully compete in the world market today.

Reduced machine downtime during initial set-up, trouble shooting and maintenance procedures means increased productivity for you. That's why Parker provides the most complete line of hydraulic and pneumatic diagnostic equipment available today.

With Parker diagnostic equipment you can take critical measurements from your system with just a push of a button. Parker diagnostic instruments are designed to identify hard-to detect variations and peaks in pressures, temperatures and flow.

Parker diagnostic quick couplings and nipples allow quick

and easy access into hydraulic or pneumatic systems at remote test points without the use of tools.

Diagnostic nipples can be permanently installed in threaded test ports in hydraulic components such as valves, cylinders, accumulators, filters or pumps.

Diagnostic tube ends, used in conjunction with a 37° flare, bite type, or O-ring face seal tube fitting, will allow you to take pressure readings in your systems tubing and hose lines where threaded test ports may not currently be available.

From diagnostic nipples to digital monitoring equipment, Parker can provide the tools necessary to increase your productivity through reduced machine downtime.