

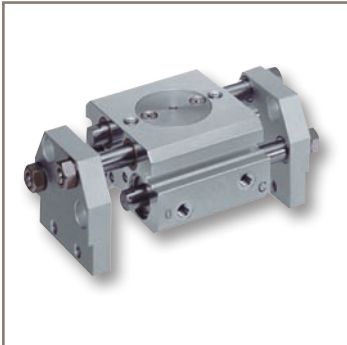


aerospace  
climate control  
electromechanical  
filtration  
fluid & gas handling  
hydraulics  
**pneumatics**  
process control  
sealing & shielding



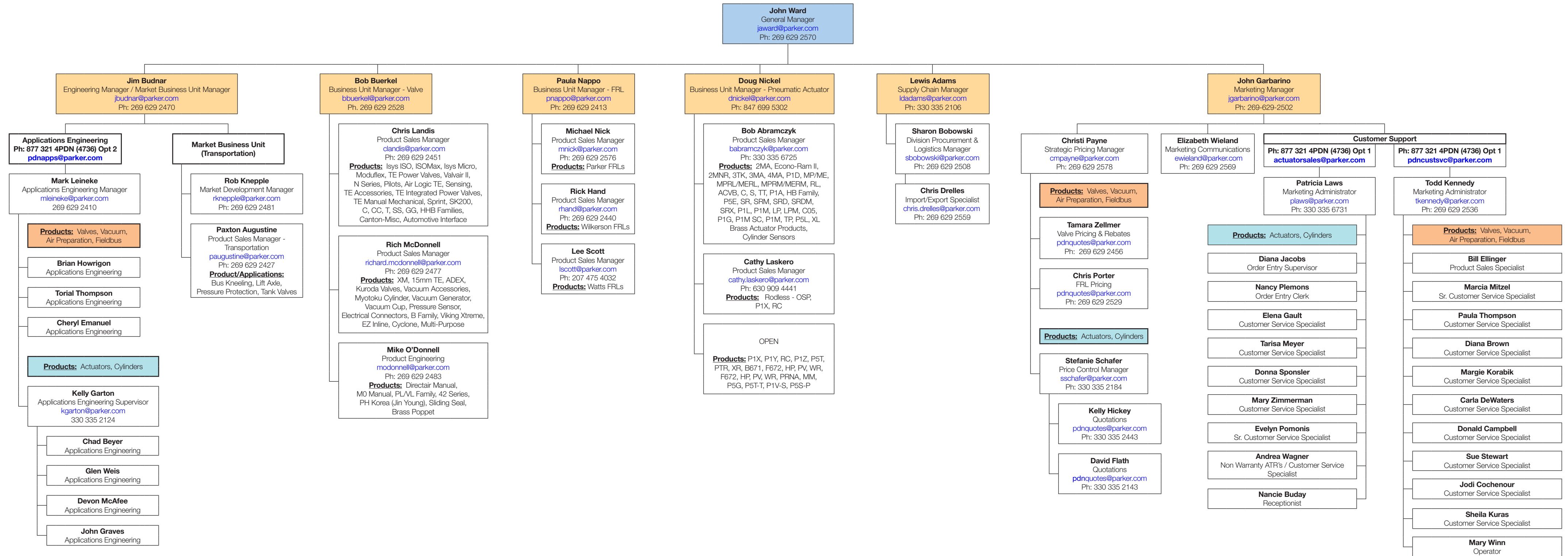
## Organizational Bulletin ORG-2

Pneumatic Division Who-to-Contact / Escalation  
Richland and Wadsworth Locations



ENGINEERING YOUR SUCCESS.

# Pneumatic Division Organizational Chart



# Who to Contact

Click name to email directly, or see Org Chart for email address.

Topic	Primary Contact		Escalation	
	Contact	Phone #	Contact	Phone #
Advertising & Marketing	<a href="#">John Garbarino</a>	269.629.2502	N/A	
Application Help	<a href="#">Applications Engineering</a>	877.321.4PDN Opt 2	<a href="#">Mark Leineke</a>	269.629.2410
Atlas Automation Technical	<a href="#">Applications Engineering</a>	877.321.4PDN Opt 2	<a href="#">Mark Leineke</a>	269.629.2410
Atlas Automation Customer Support	<a href="#">Customer Support (Wadsworth)</a>	877.321.4PDN Opt 1	<a href="#">Pat Laws</a>	330.335.6731
Competitive Information	<a href="#">Applications Engineering</a>	877.321.4PDN Opt 2	Product Sales Manager	See Org Chart
Competitive Cross Reference	<a href="#">Applications Engineering</a>	877.321.4PDN Opt 2	<a href="#">Mark Leineke</a>	269.629.2410
Credits	<a href="#">Customer Support (Richland)</a> <a href="#">Customer Support (Wadsworth)</a>	877.321.4PDN Opt 1	<a href="#">(Rich) Todd Kennedy</a> <a href="#">(Wads) Pat Laws</a>	269.629.2536 330.335.6731
Customer Tours / Visits	<a href="#">John Garbarino</a>	269.629.2502	N/A	
Customer Address Changes	<a href="#">Customer Support (Richland)</a> <a href="#">Customer Support (Wadsworth)</a>	877.321.4PDN Opt 1	<a href="#">(Rich) Todd Kennedy</a> <a href="#">(Wads) Pat Laws</a>	269.629.2536 330.335.6731
Drawings / CAD Files	<a href="#">Applications Engineering</a>	877.321.4PDN Opt 2	<a href="#">Mark Leineke</a>	269.629.2410
Expediting	<a href="#">Customer Support (Richland)</a> <a href="#">Customer Support (Wadsworth)</a>	877.321.4PDN Opt 1	<a href="#">(Rich) Todd Kennedy</a> <a href="#">(Wads) Pat Laws</a>	269.629.2536 330.335.6731
Export (NAFTA)	<a href="#">Chris Drelles</a>	269.629.2559	<a href="#">Sharon Bobowski</a>	269.629.2508
Government Compliance	<a href="#">Chris Drelles</a>	269.629.2559	<a href="#">Sharon Bobowski</a>	269.629.2508
Literature	<a href="#">C-Parker</a>	1.800.C.PARKER	<a href="#">Elizabeth Wieland</a>	269.629.2569
Catalogs	<a href="#">C-Parker</a>	1.800.C.PARKER	<a href="#">Elizabeth Wieland</a>	269.629.2569
Mailing List Changes	<a href="#">Elizabeth Wieland</a>	269.629.2569	N/A	
Marketing Data / Information	<a href="#">Elizabeth Wieland</a>	269.629.2569	N/A	
Miller Cylinders Technical	<a href="#">Applications Engineering</a>	877.321.4PDN Opt 2	<a href="#">Mark Leineke</a>	269.629.2410
Miller Cylinders Customer Support	<a href="#">Customer Support (Wadsworth)</a>	877.321.4PDN Opt 1	<a href="#">Pat Laws</a>	330.335.6731
MSDS Sheets	<a href="#">Applications Engineering</a>	877.321.4PDN Opt 2	<a href="#">Mark Leineke</a>	269.629.2410
National Accounts	<a href="#">John Garbarino</a>	269.629.2502	<a href="#">John Ward</a>	269.629.2570
New Product Introductions	<b>Product Managers</b>	See Org Chart	Business Unit Mgrs	See Org Chart
Non Conformance Reports	<a href="#">John Ward</a>	269.629.2570	N/A	
Ordering	<a href="#">Customer Support (Richland)</a> <a href="#">Customer Support (Wadsworth)</a>	877.321.4PDN Opt 1	<a href="#">(Rich) Todd Kennedy</a> <a href="#">(Wads) Pat Laws</a>	269.629.2536 330.335.6731
PHConnect	<a href="#">Diana Brown</a>	269.629.2406	<a href="#">Todd Kennedy</a>	269.629.2536
Photos and Art	<a href="#">Elizabeth Wieland</a>	269.629.2569	<a href="#">John Garbarino</a>	269.629.2502
Policy and Procedures	<a href="#">(Richland) Todd Kennedy</a> <a href="#">(Wadsworth) Pat Laws</a>	269.629.2536 330.335.6731	<a href="#">John Garbarino</a> <a href="#">John Garbarino</a>	269.629.2502 269.629.2502
Price Lists	<a href="#">Stefanie Schaffer</a>	330.335.2184	<a href="#">Christi Payne</a>	269.629.2578
Pricing Policies	<a href="#">Christi Payne</a>	269.629.2578	<a href="#">John Garbarino</a>	269.629.2502
Product Liability	<a href="#">Gary Baumgarder</a>	269.629.2471	<a href="#">Jim Budnar</a>	269.629.2470
Product School Enrollment	<a href="#">Elizabeth Wieland</a>	269.629.2569	<a href="#">John Garbarino</a>	269.629.2502
Quote Updates / Special Pricing	<a href="#">Pricing Team</a>	877.321.4PDN Opt 3	<a href="#">Christi Payne</a>	269.629.2578
Rebate Claims	<a href="#">Tammy Zellmer</a>	269.629.2456	<a href="#">Christi Payne</a>	269.629.2578
Repairs in Field	<a href="#">Applications Engineering</a>	877.321.4PDN Opt 2	<a href="#">Mark Leineke</a>	269.629.2410
Restock Charges	<a href="#">Customer Support (Richland)</a> <a href="#">Customer Support (Wadsworth)</a>	877.321.4PDN Opt 1	<a href="#">(Rich) Todd Kennedy</a> <a href="#">(Wads) Pat Laws</a>	269.629.2536 330.335.6731
Returns: Non-Warranty	<a href="#">Customer Support (Richland)</a> <a href="#">Customer Support (Wadsworth)</a>	877.321.4PDN Opt 1	<a href="#">(Rich) Todd Kennedy</a> <a href="#">(Wads) Pat Laws</a>	269.629.2536 330.335.6731
Warranty	<a href="#">Applications Engineering</a>	877.321.4PDN Opt 2	<a href="#">Mark Leineke</a>	269.629.2410
Sales Samples	<a href="#">Customer Support (Richland)</a> <a href="#">Customer Support (Wadsworth)</a>	877.321.4PDN Opt 1	<a href="#">(Rich) Todd Kennedy</a> <a href="#">(Wads) Pat Laws</a>	269.629.2536 330.335.6731
Shipping, Tracing, Damage	<a href="#">Customer Support (Richland)</a> <a href="#">Customer Support (Wadsworth)</a>	877.321.4PDN Opt 1	<a href="#">(Rich) Todd Kennedy</a> <a href="#">(Wads) Pat Laws</a>	269.629.2536 330.335.6731
Special Product Requests	<a href="#">Applications Engineering</a>	877.321.4PDN Opt 2	<a href="#">Mark Leineke</a>	269.629.2410
Stock Check	<a href="#">Customer Support (Richland)</a> <a href="#">Customer Support (Wadsworth)</a>	877.321.4PDN Opt 1	<a href="#">(Rich) Todd Kennedy</a> <a href="#">(Wads) Pat Laws</a>	269.629.2536 330.335.6731
Terms and Conditions	<a href="#">Customer Support (Richland)</a> <a href="#">Customer Support (Wadsworth)</a>	877.321.4PDN Opt 1	<a href="#">(Rich) Todd Kennedy</a> <a href="#">(Wads) Pat Laws</a>	269.629.2536 330.335.6731
Test and Evaluation	<a href="#">Applications Engineering</a>	877.321.4PDN Opt 2	<a href="#">Mark Leineke</a>	269.629.2410
TOPS / EDI	<a href="#">(Richland) TOPS: Carla DeWaters</a> <a href="#">(Richland) EDI: Diana Brown</a> <a href="#">(Wadsworth) Customer Support</a>	269.629.2526 269.629.2406 877.321.4PDN Opt 1	<a href="#">Bill Ellinger</a> <a href="#">Marcia Mitzel</a> <a href="#">Pat Laws</a>	269.629.2524 269.629.2449 330.335.6731
Trade Show Displays	<a href="#">Elizabeth Wieland</a>	269.629.2569	<a href="#">John Garbarino</a>	269.629.2502

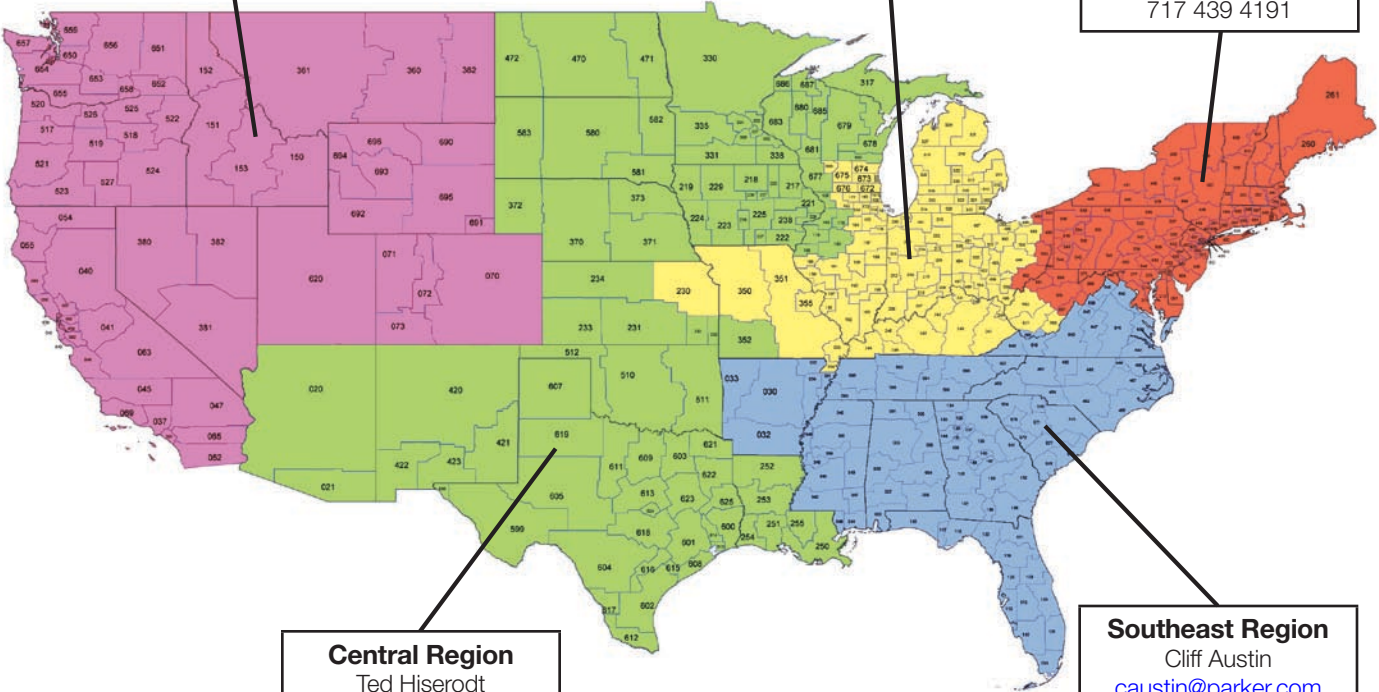
# Pneumatic Field Sales Management

**Dale Nogar**  
National Sales Manager  
[dnogar@parker.com](mailto:dnogar@parker.com)  
216 896 3000

**Western Region**  
Neil Pedersen  
[npedersen@parker.com](mailto:npedersen@parker.com)  
206 953 4838

**Great Lakes Region**  
Bill Service  
[bservice@parker.com](mailto:bservice@parker.com)  
330 283 4915

**Northeast Region**  
Andy McCarty  
[amccarty@parker.com](mailto:amccarty@parker.com)  
717 439 4191



**Central Region**  
Ted Hiserodt  
[thiserodt@parker.com](mailto:thiserodt@parker.com)  
602 430 5007

**Southeast Region**  
Cliff Austin  
[caustin@parker.com](mailto:caustin@parker.com)  
770 316 0805

Electronic copy of this Bulletin ORG-2 is available on PHConnect via the A & H Distributor Forum link. Login using your PHConnect ID.

ORG-2 12/2/09



Parker Hannifin Corporation  
**Pneumatic Division Headquarters**  
8676 E. M89  
Richland, MI 49083 USA  
Tel: 269 629 5000  
Fax: 269 629 5385

Parker Hannifin Corporation  
**Pneumatic Division**  
135 Quadral Drive  
Wadsworth, OH 44281 USA  
Tel: 330 336 3511  
Fax: 330 334 3335